

**T**

**A**

**Č**

**R**

**Research useful to society**

# **TA CR support energy field**

**Vladimír Kebo**

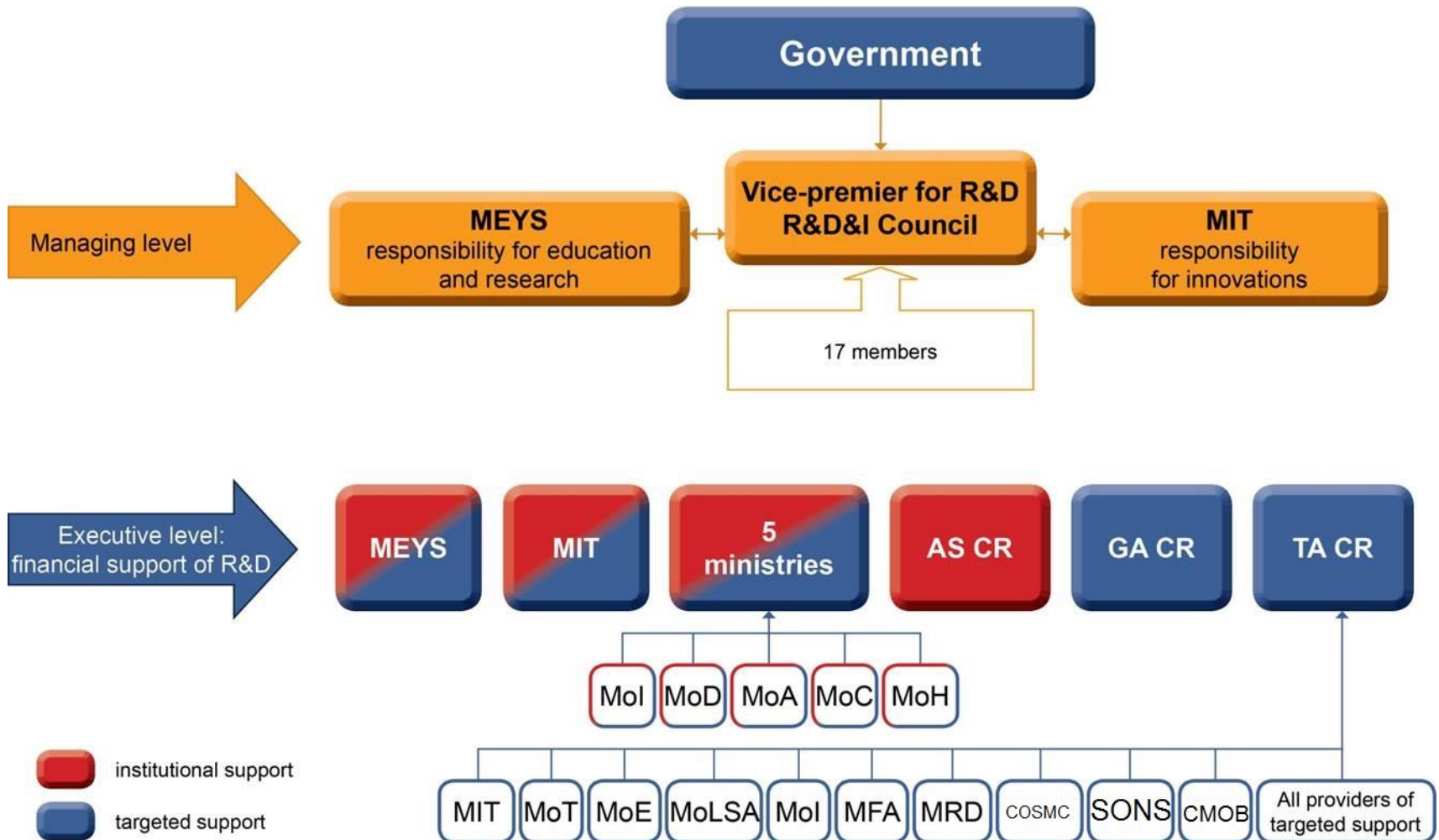
**Member of the Presidium**

**10th September 2015**

**round table – ENERGY IS MONEY**

T A  
Č R

# Management of R&D System in the CR



**T A**  
**Č R**

## **TA CR** **Founding**

- Organizational unit of the state and an administrator of a state budget chapter with the effect from 1<sup>st</sup> July 2009
- Based on the amendment to the Act No. 130/2002 Coll. (Act on support of R&D)
- Tool for the implementation of a reform of R&D system
  - To reduce a number of state budget funding bodies
  - To simplify the administration of the R&D

**T A**

**TA CR**

**Č R**

## **Tasks and Activities**

- The preparation and implementation of programmes of applied research, development and innovation
- Comprehensive project management (project selection, monitoring of the performance, evaluation of outputs)
- Providing the targeted support from the state budget
- Consultancy to researchers and users of project results especially in the legal field, financial field and in the field of protection of intellectual property
- Collaboration with ministries that ensure applied research, development and innovation, and similar agencies – both domestic and foreign

T A

TA CR

Č R

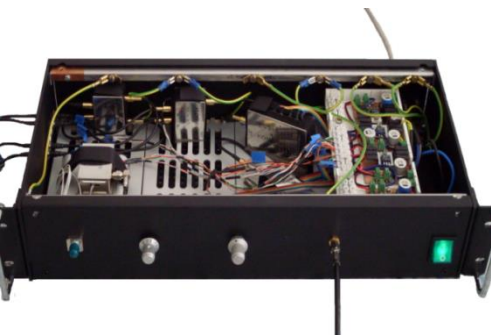
## Ongoing programmes

- ALPHA** – Searching for “smart solutions“ in areas of progressive technologies,, energy and protection of the environment, sustainable transportation
- BETA** – Public procurement in R&D for the needs of public administration bodies
- GAMMA** – Support for the commercialization of outputs of applied research and development
- DELTA** – support of international collaboration in R&D
- EPSILON** – replaces program ALPHA, based on ministerial strategies and National priorities of oriented research
- OMEGA** – Searching for “smart solutions“ in the field of applied social sciences
- Competence Centres** – Support for the collaboration between research organizations and companies

**T A**  
**Č R**

## Ongoing programmes **ALPHA**

- 968 projects are supported within 4 calls
- In 52% of the projects principal investigator are the enterprise
- 40% of the principal investigators are from Prague
- The most common type of results are Functional Prototype and sample
- The most successful organizations in terms of the number of supported projects are Universities, specifically the Czech Technical University in Prague and Brno
- More than half of the budget goes to projects in the industrial field



T A  
Č R

## Ongoing programmes Competence centres

- Within the first call 22 projects were supported
- The results of the second public tender was published in November 2013, total of 12 centers were selected for support
- Total of 323 participants (66% of companies) were involved in solutions of the supported projects





**T A**  
**Č R**

## **Ongoing programmes** **EPSILON**

- Support for industrial applications especially in the use of new technologies and new materials in the industry, energy, environment and transport
- As a replacement of programmes ALPHA and TIP (MIT)
- Duration of the programme 2015–2025 (including evaluation)
- In the 1st call 97 projects are supported

T A  
Č R

## TA CR projects energetics field

### TE02000236 - Waste-to-Energy (WtE) Competence Centre

**Execution time:** 1st January 2014 – 31st December 2018

**Total state budget subsidy:** 122,720 thousand CZK

**Participants on the project:** Vysoké učení technické v Brně / Fakulta strojíního inženýrství; ZVVZ-Enven Engineering, a.s.; PBS INDUSTRY, a.s.; ČEZ, a. s.; EVECOCO Brno, s.r.o.; Ústav chemických procesů AV ČR, v. v. i.

### TE02000077 - Smart Regions - Buildings and Settlements Information Modelling, Technology and Infrastructure for Sustainable Development

**Execution time:** 1st January 2014 – 31st December 2019

**Total state budget subsidy:** 169,613 thousand CZK

**Participants on the project:** ENKI, o.p.s.; Strojírenský zkušební ústav, s.p.; Technický a zkušební ústav stavební Praha, s.p.; KNAUF Praha, spol. s r. o.; RD Rýmařov s. r. o.; SIGMA Výzkumný a vývojový ústav, s.r.o.; SANTIS a.s.; Úsporné bydlení s.r.o.; VÍTKOVICE POWER ENGINEERING a.s.; PREFA KOMPOZITY,a.s.; SMP CZ, a.s.; Pelčák a partner, s.r.o.; VÍTKOVICE ÚAM a.s.; MemBrain s.r.o.; Architektonická kancelář Burian-Křivinka s.r.o.; AQUA PROCON s.r.o.; ORTEP, s.r.o.; SEWACO s.r.o.; SOLARENVI a.s.; A-SPEKTRUM s.r.o.; PKS okna a.s.; České vysoké učení technické v Praze / Fakulta stavební; Vysoké učení technické v Brně / Fakulta stavební; Saint-Gobain Construction Products CZ a.s.; H.L.C. spol. s r.o.; PKS holding a.s.

**T A**  
**Č R**

# TA CR projects energetics field

## **TA02020538 - Research and development of methods and algorithms for optimizing decisions on deployment of energy resources in terms of cost and emissions**

**Execution time:** 1st January 2012 – 31st December 2014

**Total state budget subsidy:** 2,880 thousand CZK

**Participants on the project:** Západočeská univerzita v Plzni / Fakulta aplikovaných věd; ARTINEL, s.r.o.

## **TA03011091 - Smart metering system for power engineering industry**

**Execution time:** 1st January 2013 – 31st December 2014

**Total state budget subsidy:** 8,726 thousand CZK

**Participants on the project:** ZPA Smart Energy a.s.; České vysoké učení technické v Praze / Fakulta elektrotechnická

## **TA04030145 - Specification and Optimization Energy Flow in Trolleybus Transport with Respect to Lower Electric Energy Consumption, Length of Power-supply Trolley Wire Units and to Requirements of Integrated Public Transport System**

**Execution time:** 1st July 2014 – 30th June 2017

**Total state budget subsidy:** 3,718 thousand CZK

**Participants on the project:** Technická univerzita v Liberci / Ústav pro nanomateriály, pokročilé technologie a inovace; Dopravní podnik města Ústí nad Labem a.s.

**T A**  
**Č R**

## **TA CR projects energetics field**

### **TA02021257 - Performance optimization of a biogas station with prismatic fermenters in a model farm holding considering agricultural system and environment**

**Execution time:** 1st January 2012 – 31st December 2015

**Total state budget subsidy:** 5,724 thousand CZK

**Participants on the project:** Hanácká zemědělská společnost Jevíčko a.s.; Výzkumný ústav rostlinné výroby, v.v.i.; DLF - TRIFOLIUM Hladké Životice, s.r.o.

### **TA01020932 - Utilization of geothermal energy for renewable energy sources installations including heat storage feasibility study**

**Execution time:** 1st January 2011 – 31st December 2014

**Total state budget subsidy:** 15,165 thousand CZK

**Participants on the project:** Vysoká škola báňská - Technická univerzita Ostrava / Hornicko-geologická fakulta; Green Gas DPB, a.s.; DHI a.s.

### **TA02020006 - Utilization of the Waterworks Hydroenergetic Potential**

**Execution time:** 1st January 2012 – 31st December 2014

**Total state budget subsidy:** 11,223 thousand CZK

**Participants on the project:** Vysoká škola báňská - Technická univerzita Ostrava / Centrum energetického využití netradičních zdrojů energie; SIGMA Výzkumný a vývojový ústav, s.r.o.; Vysoké učení technické v Brně / Fakulta stavební

T A  
Č R

Thank you for your attention



[www.tacr.cz](http://www.tacr.cz)

